



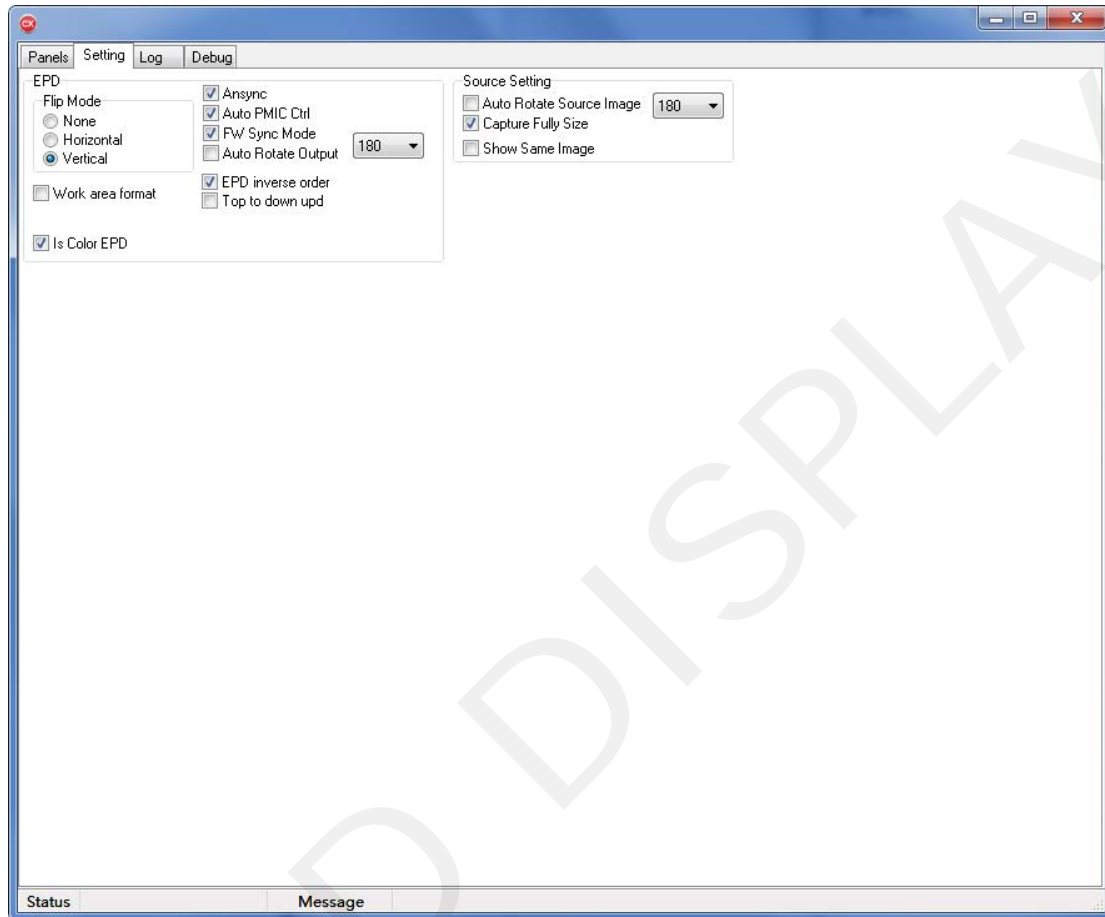
Instruction of MultiEPD



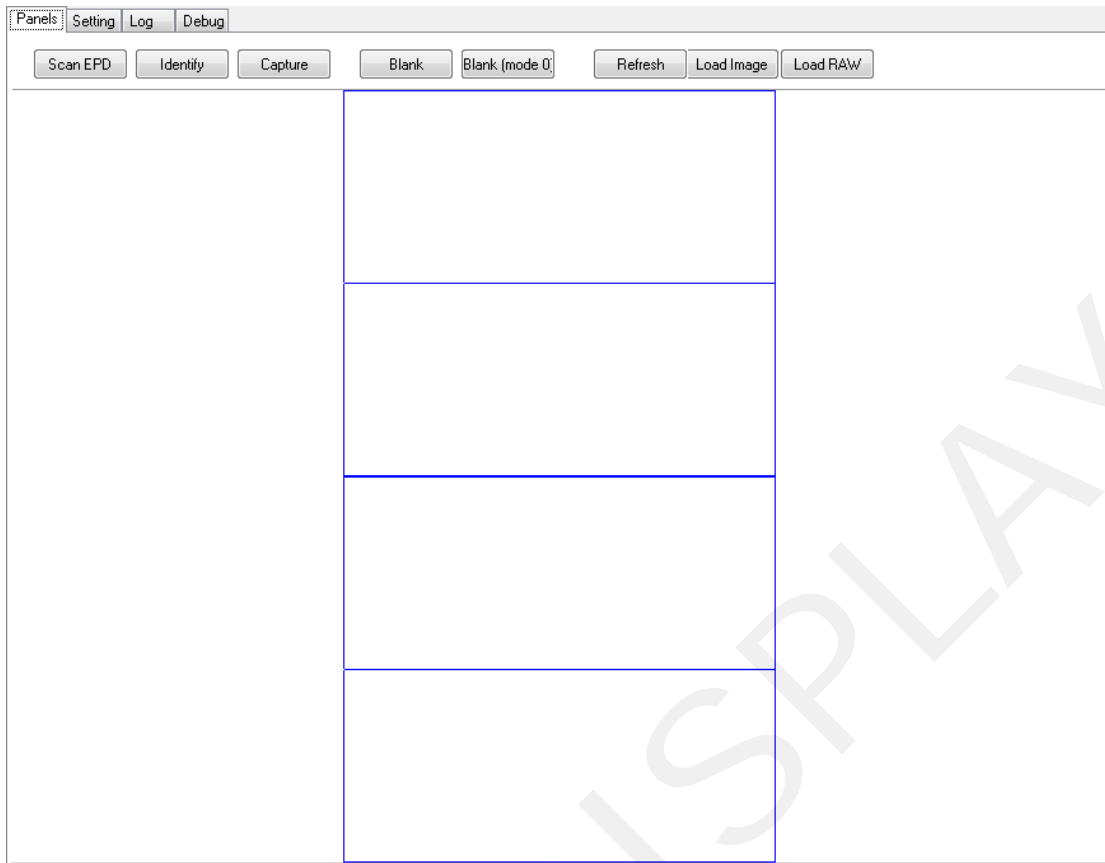
Dalian Good Display Co., Ltd.

Instruction of MultiEPD

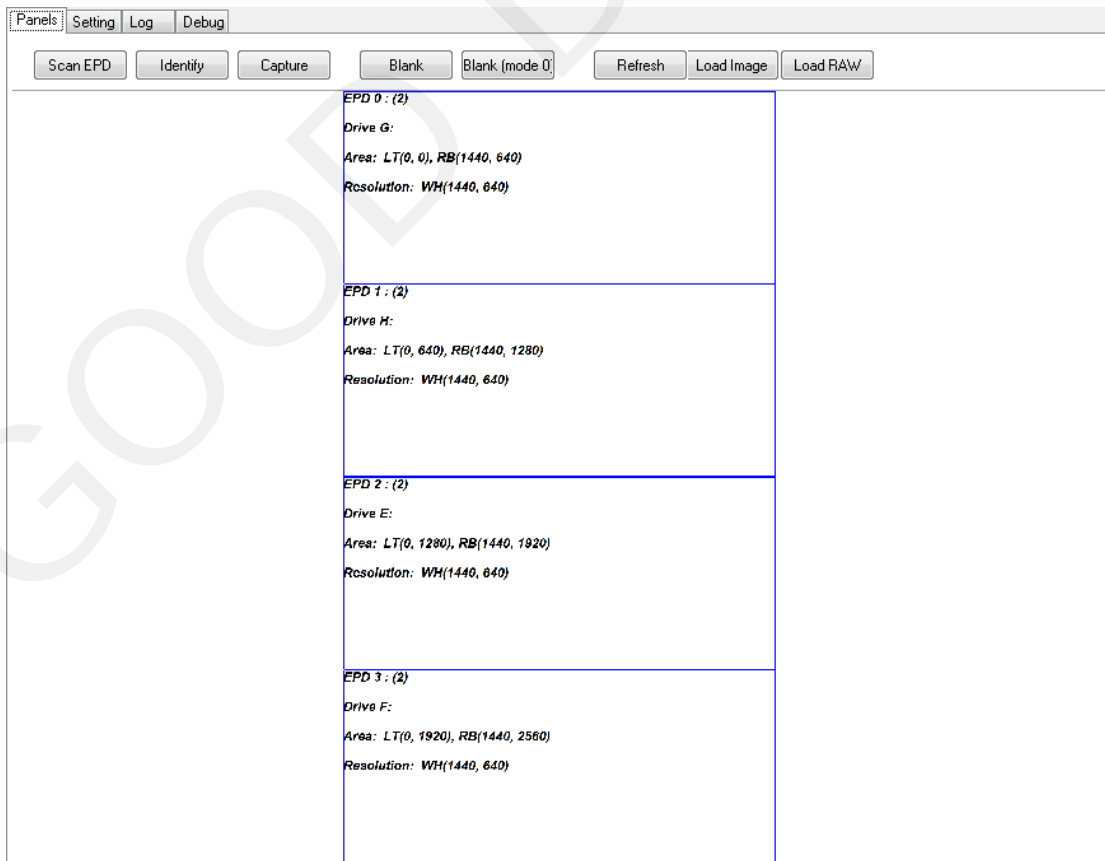
1. Connect USB to power on the target board, when the system informs you to install the driver. Open the software and move to Setting page to confirm whether the settings are as shown below:



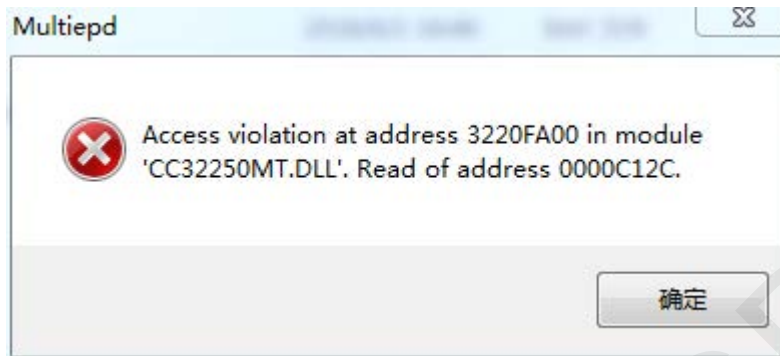
2. Move to Panels page.
 3. Click the "Scan EPD" button when it starts to scan the device to check the IC situation. Normally it will be as shown below:



5. Click "Identify" button, when the software starts communication with IC to read information. Normally it will be as shown below:



6. Click "Load Image" to load the image you need, uploading usually done after 3~5 s.
7. Remarks:
 - 7.1 You must make sure the setting "Is color EPD" at the second step. Otherwise, following steps may fail. During the whole process, you can omit the fifth step while not the fourth one.
 - 7.2 If the software is dead, you need to open the Windows Task Manger to end "MultiEPD.exe" manually.
 - 7.3 If following error occurs, please check if it has already been opened. End the program and reopen it.



- 7.4 "Refresh" button below EPD Panels page means refreshing, namely to update the image in computer on the screen. Users can choose depending on different scenarios.